

Backing Up & Restoring Your Charting Software

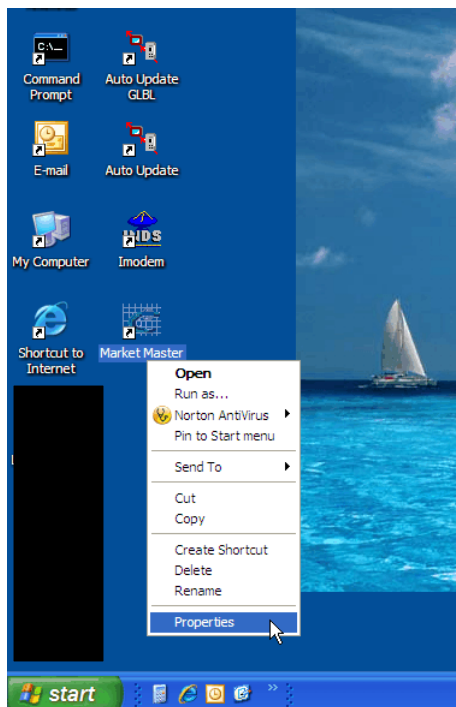
April 2010

Before executing a Program Refresh it is always good practice to back up your stock-market program, so that you can recover to your current working state should something go wrong.

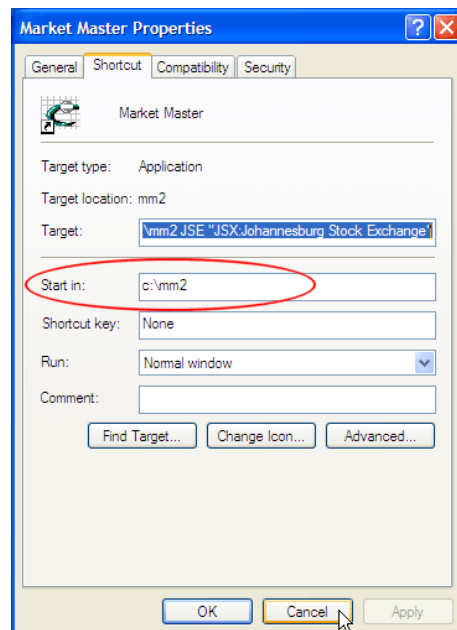
We would recommend that you carefully follow the steps outlined in the following pages. Please print this document for easier reference, read it through and then follow the steps relevant to you.

First and foremost: Where has your charting software been installed?

1. Right-click on the icon you use to launch your charting software (in this example, the Market Master icon).
2. Choose Properties from the menu.



3. Navigate to the Shortcut tab in the Properties window.
4. Take note of the drive and folder name listed in the Start In box. In this example, the charting software is stored on the C: drive and in the mm2 folder- **if your details differ, use your details in all the applicable steps that follow.**
5. Click Cancel to close the Properties window.

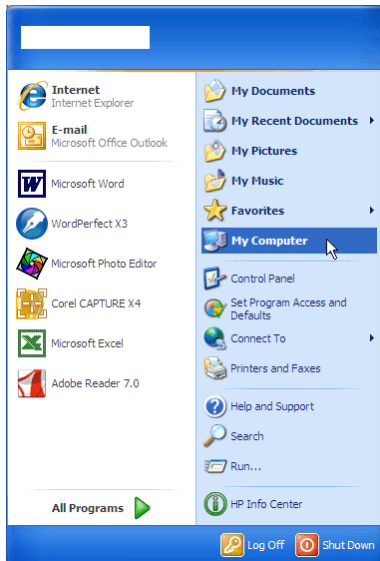


Backing Up your Program and Data

Task 1 - Check your Hard Disk

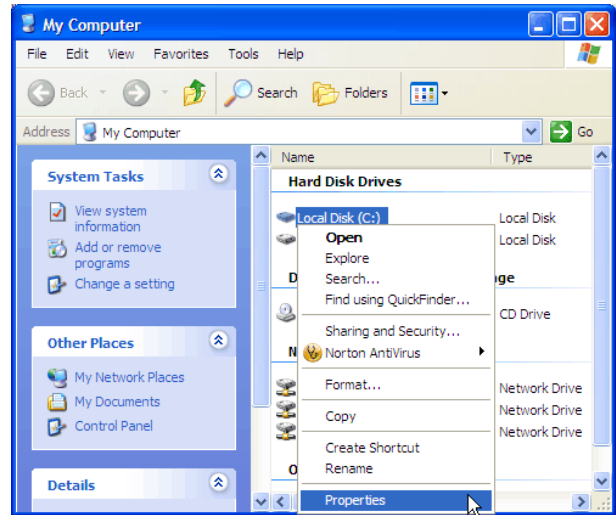
To ensure there are no corrupt files on your computer that may affect your backup perform the following steps:

1. Open My Computer.



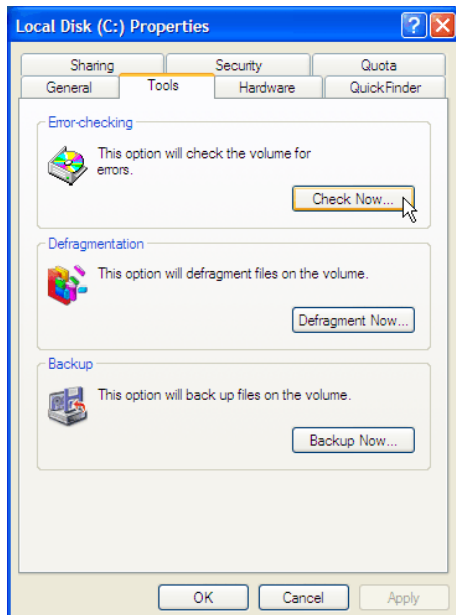
2. Right-click on the drive on which your charting software is installed (in this example, the C: drive).

3. Choose Properties from the menu.



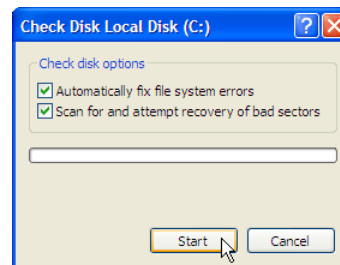
4. In the Properties window navigate to the Tools tab.

5. Click on the Check Now button.



6. Tick both check-boxes.

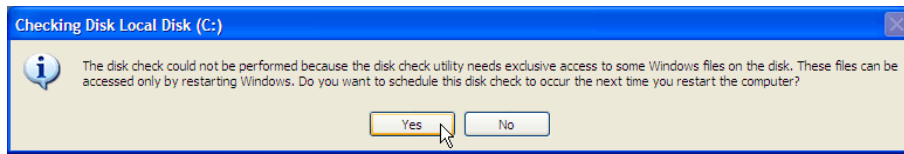
7. Click Start.



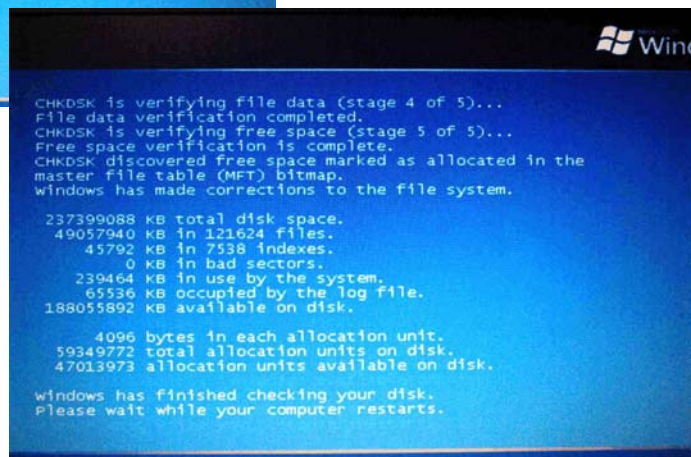
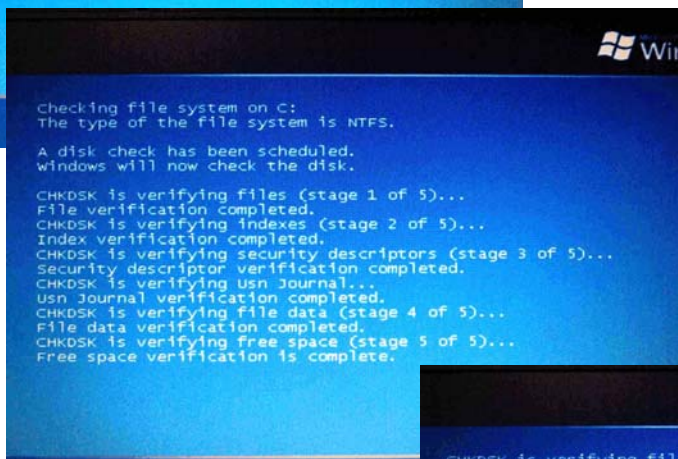
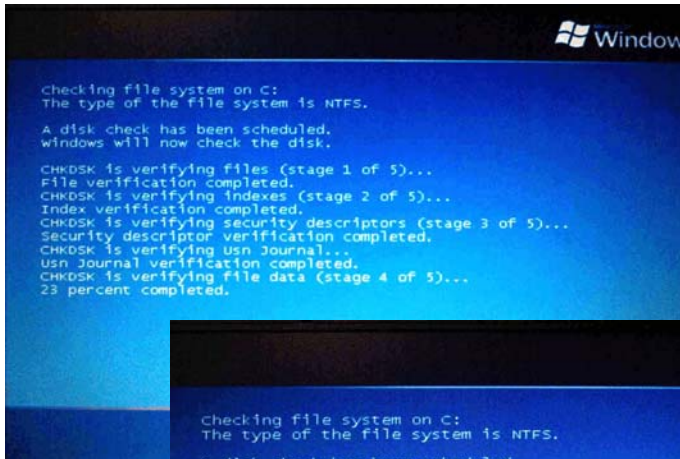
Backing Up your Program and Data

Task 1 - Check your Hard Disk - cont.

If the following box appears on your computer screen, then your computer cannot start the disk-check process immediately and you need to follow Steps 8 to 12 to continue with the process.



8. Click Yes.
9. Click Cancel to close the Properties window.
10. Save and close any open files and programs you may have running on your computer.
11. Reboot your computer.
12. The disk-check process will run for a while...it may take a number of hours, if you have a large hard drive. The examples below display some of the screen information during this process.

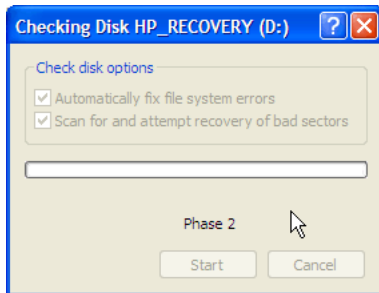
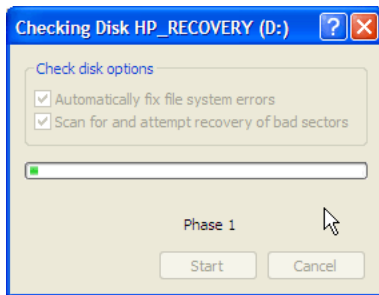


Backing Up your Program and Data

Task 1 - Check your Hard Disk - cont.

Steps 13 and 14 apply to users whose computer allows the disk-check process to run immediately.

13. Let the disk-check process run, as per the examples below.



14. Click OK when the process has completed.



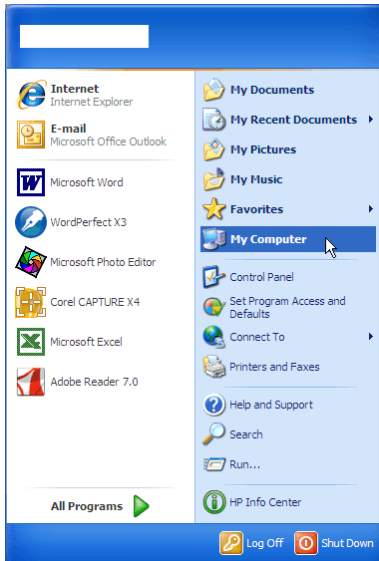
With your disk-check process complete you can be sure that your computer's file system is 100% healthy and it would be safe to proceed with your backup.

Backing Up your Program and Data

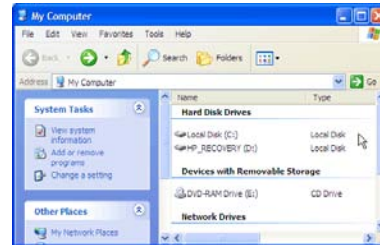
Task 2 - Back Up your Program and Data

The backup method outlined in this task involves copying your charting software folder. This will ensure you have a backup of all your workbooks, etc.

1. Open My Computer.

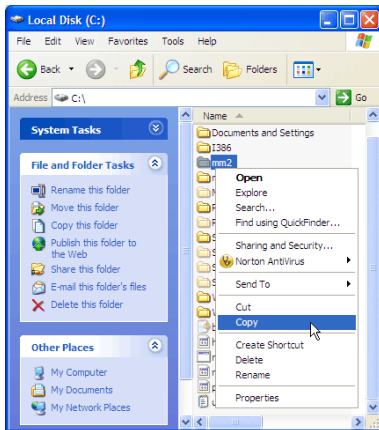


2. Open the drive on which your charting software is installed (in this example, the C: drive).



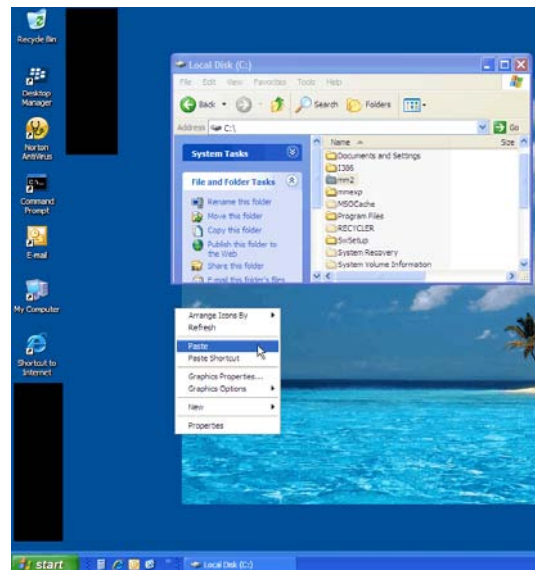
3. Right-click on your charting software folder (in this example, the mm2 folder).

4. Choose Copy from the menu.



5. Navigate to your Desktop and right-click in an empty space.

6. Choose Paste from the menu.



Restoring your Program and Data (Only if Needed!)

1. Navigate to your Desktop.
2. Select and Open (double-click) the backup copy of your charting software folder previously saved to your Desktop.
3. From the Edit menu choose Select All - this action will highlight all items in the backup copy of your charting software folder.
4. Again from the Edit menu choose Copy.
5. Now Open My Computer.
6. Open the drive on which your charting software is installed.
7. Right-click on your charting software folder.
8. Choose Paste from the menu.
9. You may be prompted to overwrite existing files or folders...if so, select Yes or Yes to All.